



www.santos.fr



## CENTRIFUGAL JUICER #50 "Santos Juicer"

To extract the maximum quantity  
of fruit and vegetable juices



Internationally patented models

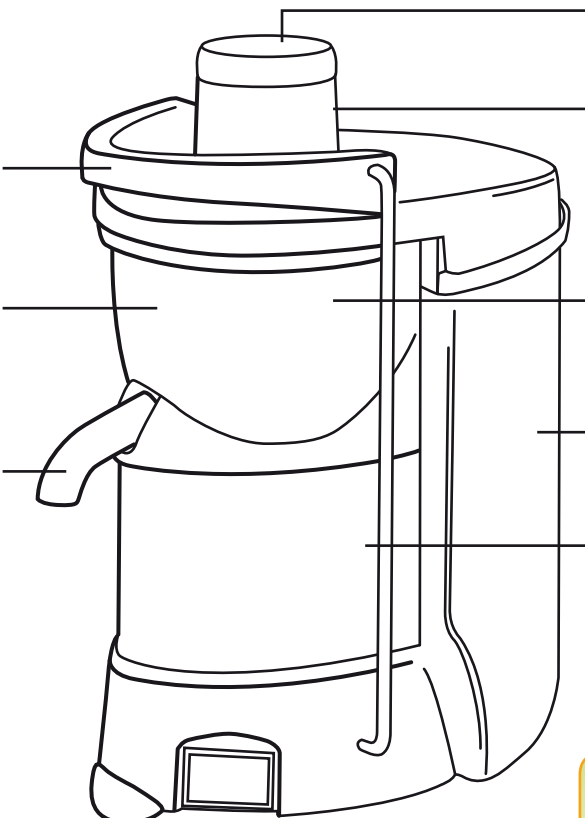




## CENTRIFUGAL JUICER #50

### FOR A HIGH QUALITY JUICE

You can make any kind of fruit and vegetable juices and keep all the vitamins with the **juice extractor #50**. Easy to use, silent and powerful, it is the ideal appliance for juice bars, hotels, restaurants and health food stores.



**Safety:** locking system. Electric cut off and motor braking when opening the handle.

**Filter basket:** obtain a perfect filtration thanks to its very fine sieve (0.5mm / 0.02" holes) Basket with 0.8mm holes available on demand.

**Spout height:** 200mm. Accepts glasses, jugs and blender jars.

**Pusher:** low effort, constant flow, maximum yield.

**Extra wide feeding chute:** Ø 79.5mm (3"). No need to cut fruits or vegetables.

**Ezy-clean™ system:** removable bowl, basket and cover (no tool needed).

**Large capacity pulp container:** 7.5l (2 gallons).

**Powerful:** Asynchronous motor, powerful (800 W) and very silent.

**Output**  
Up to **100** liters of juice per hour

**A cleaning brush and a maintenance set (1 shifter rubber ring + 3 seals) are delivered with the appliance.**



## SANTOS, WORLDWIDE LEADER IN COMMERCIAL JUICERS

### WE HAVE THE JUICE EXTRACTOR YOU NEED...

Santos has a 25 years experience in creating juice extractors and developing exclusive patented systems to provide an incomparable reliability and efficiency.

### Rigour and quality

All Santos juice extractors are in accordance with the most stringent international regulations: GS, UL, NSF.



#28



#50



#58



#68

..... 1986 ..... 2001 ..... 2006 ..... 2013 ..... ➔

**The professional art of juicing since 1954**

“Santos Juicer”



## QUALITY, EXPERTISE, COMFORT

### High quality juice

- **Perfect filtration:** very fine sieve offering a high quality juice.
- **Maximum juice extraction:** excellent yield, dry pulp in the container.
- **Preservation of vitamins:** it extracts juice from fruits and vegetables without crushing or heating them.
- **Creativity:** possibility to make any kind of juice, ex: ginger, beetroot, cucumber, pineapple, melon, grapes...

### Expertise

- **Exclusive patents:** exclusive extra wide feeding chute, Ezy-clean™ system, instant friction braking system.
- **Professional motor,** powerful and extremely silent (Santos know-how).
- **High output juice** extractor, adapted to intensive use (ex: juice bars).
- **Sturdy appliance** mostly made of aluminium and stainless steel.

### Simplicity and comfort

- **Silence:** you can serenely make juice in front of your customers.
- **Space-saving product:** it fits everywhere thanks to its low overall dimensions.
- **Extra wide feeding chute:** you can put entire fruits and vegetables (time-saving).
- **Continuous juice production:** automatic pulp ejection.
- **Ezy-clean™ system:** removable bowl, basket and cover (no tool needed). Easy cleaning.
- **Large basket:** more juice, less cleaning.



### TECHNICAL SPECIFICATIONS



#### Motor

Single phase: 100-120V – 50/60Hz – 800 W CE – UL – NSF  
220-240V – 50/60Hz – 800 W CE – KC

Speed: 3 000 rpm (50 Hz)  
3 600 rpm (60 Hz)



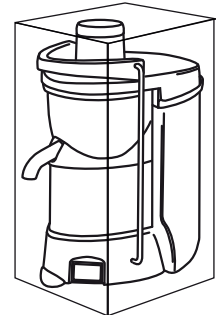
#### Weight

Net: 14 kg (31 lbs)  
Shipping: 16 kg (35 lbs)



#### APPLIANCE

W: 260 mm / 10"  
D: 470 mm / 19"  
H: 450 mm / 18"



#### SHIPPING BOX

W: 315 mm / 12"  
D: 500 mm / 20"  
H: 570 mm / 22"

### SAFETY, STANDARDS, HYGIENE

#### In accordance with the following regulations

- Machinery directive 2006/42/EC
- Electromagnetic compatibility 2004/108/EC
- Electrical equipment designed for use within certain voltage limits "low voltage" 2006/95/EC
- RoHS directive 2002/95/EC
- Regulation 1935/2004/EC (contact with food)

#### Harmonized European standards

- EN ISO 12100 - 1 and 2: 2004
- EN 60204-1: 2006
- EN 12547+A1: 2009 Juice extractors
- EN 60335-2-64: 2004 Commercial electric kitchen machines
- CE (Europe), UL (USA) and cUL (Canada), NSF (USA), KC (Korea)

#### Thermal safety

Motor protected by internal thermal detector and overload protector.

#### Electrical safety

- On/off switch detects overloading and no voltage.
- All mechanical parts are ground connected.
- Appliances are 100% tested after assembly.

#### Acoustic safety

Silent asynchronous motor.

#### Mechanical safety

A friction brake immediately stops the basket when opening the handle.

#### Hygiene

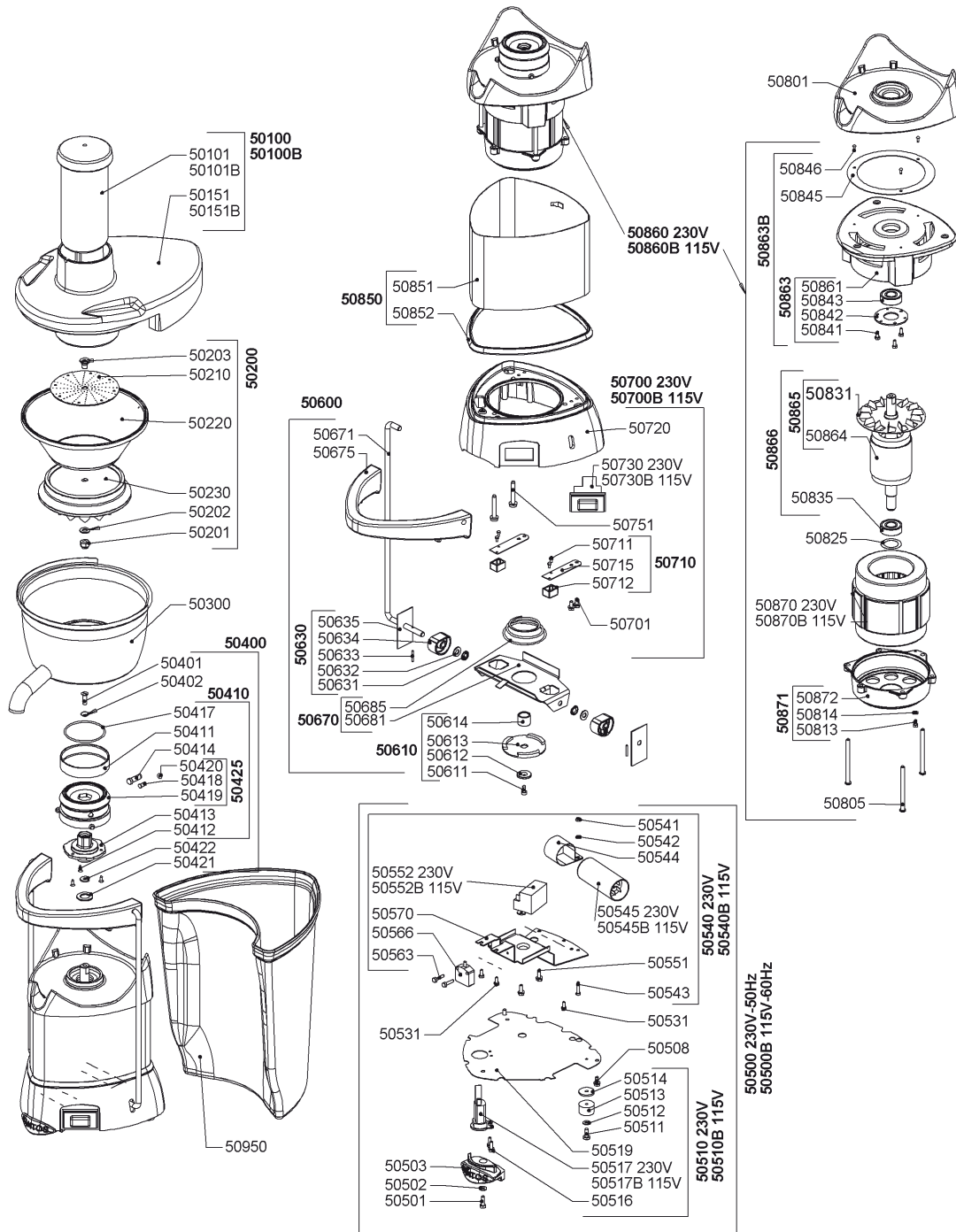
All removable parts can be put in a dishwasher or easily cleaned with hot soapy water.

PRODUCT: 2-YEAR WARRANTY | MOTOR: 5-YEAR WARRANTY

**CENTRIFUGAL JUICER #50**  
 "Santos Juicer"



www.santos.fr



**SANTOS**

140-150 Avenue Roger Salengro BP 80 067 – 69511 Vaulx-en-velin Cedex (Lyon) – FRANCE  
 Tel. +33 4 72 37 35 29 – Fax. +33 4 78 26 58 21 – Website: www.santos.fr – Email: santos@santos.fr

Follow us on #SantosAddict social networks   